

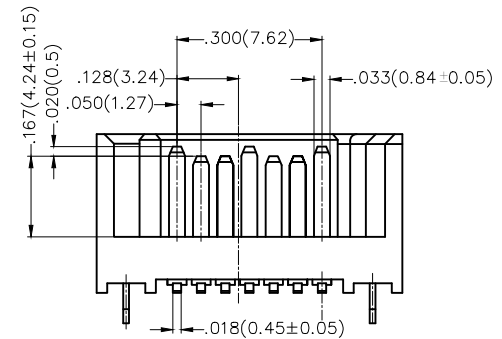
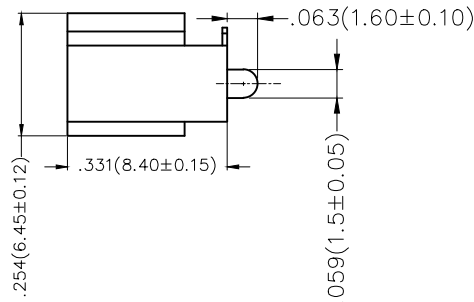
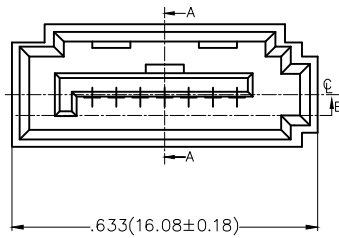
SPECIFICATIONS

Electrical

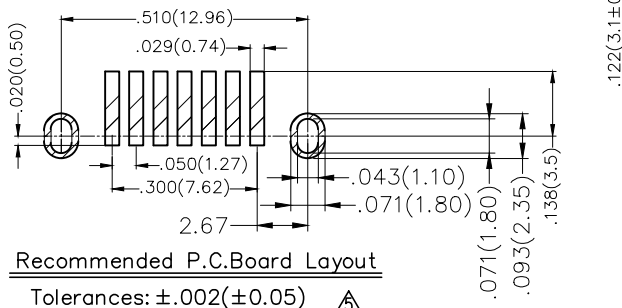
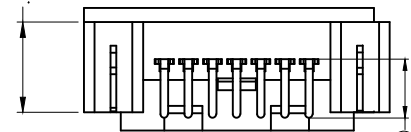
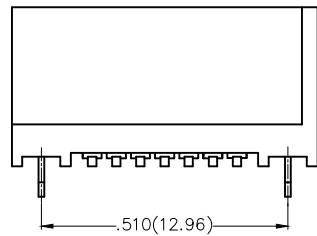
Current Rating: 1.5A AC(rms)/DC
 Contact Resistance: 20 mΩ Max
 Insulation Resistance: 800 MΩ MIN
 Withstanding Voltage: 600V AC r.m.s
 Temperature Range-Operating: -40°C~+105°C

Material

Housing: Thermoplastic UL94V-0, Black
 Terminal: Copper Alloy, Gold Plated 1μ" On Contact Area,
 Matte-Tin Plated On Solder Tails,
 With Entire Contact Underplated Nickel 50μ"
 Board Lock: Copper Alloy, Matte-Tin Plated Over Nickel



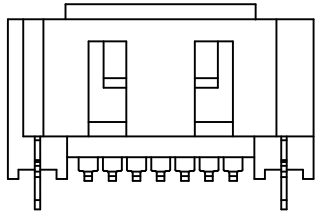
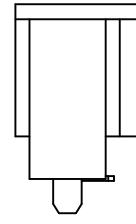
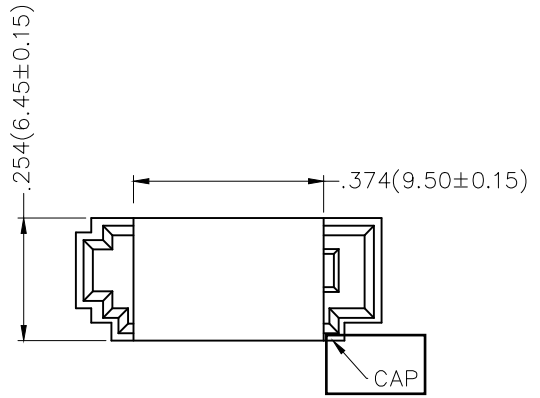
.187(4.75±0.15)



1	Category	2	Circuits	3	Distinction No.	4	Type	5	Assembly Layout	6	Entry Angle
	SATA						M-Male		S-SMT		T-Vertical
7	Plating	8	Thickness of Gold Plating	9	Material-Resin	10	Color-Resin	11	Packaging		
	3-Half Gold/Tin		00-Gold Flash 01-1u" 05-5u" ...		L-LCP		B -Black		TR -Reel L-Tube		

 THIRD ANGLE PROJECTION	GENERAL TOLERANCES (UNLESS SPECIFIED)		APPROVE BY	DATE	PART NO.	ITEM NO.	
	X.±.012(0.30)	X.±5'	CHECKED BY	DATE	SATA MST301LBTR		
DESIGN UNITS Inch (metric)	X.X±.008(0.20)	X.±2'	DRAWN BY	DATE	TITLE		
SCALE 5:1	X.XX±.006(0.15)	.XX'±1'		DATE	SATA 7P MALE SMT		REV 5
SIZE A4	X.XXX±.004(0.10)	.XXX'±0.5'		18/JUN/13			SHEET NO. 1/4

REV	LOCATIONS	DESCRIPTION	DATE	REVISER	APPD



 THIRD ANGLE PROJECTION	GENERAL TOLERANCES (UNLESS SPECIFIED)		APPROVE BY	DATE	PART NO.	ITEM NO.			
	X.±.012(0.30)	X'±5'	CHECKED BY	DATE	SATA MST301LBTR				
	DESIGN UNITS Inch (metric)	X.X±.008(0.20)	X'±2'		DATE	TITLE		REV 3	SHEET NO. 2/4
	SCALE	SIZE	X.XX±.006(0.15)	X'±1'	DRAWN BY	DATE	SATA 7P MALE SMT		
5:1	A4	X.XXX±.004(0.10)	.XXX'±0.5'		DATE				
					18/JUN/20				
					18/JUN/20				
					18/JUN/20				

1 2 3 4 5 6 7 8

REV	LOCATIONS	DESCRIPTION	DATE	REVISER	APPD

A

A

ITEM	W	A0	B0	K0	S0	E	F	D0	P	P0	P2	T
DIM	1.260(32.0±0.3)			.445(11.3±0.15)	1.118(28.4±0.1)	.069(1.75±0.1)	.559(14.2±0.1)	.059(1.5 ^{+0.15} ₀)	.630(16.0±0.1)	.157(4.0±0.1)	.079(2.0±0.1)	

B

B

C

C

D

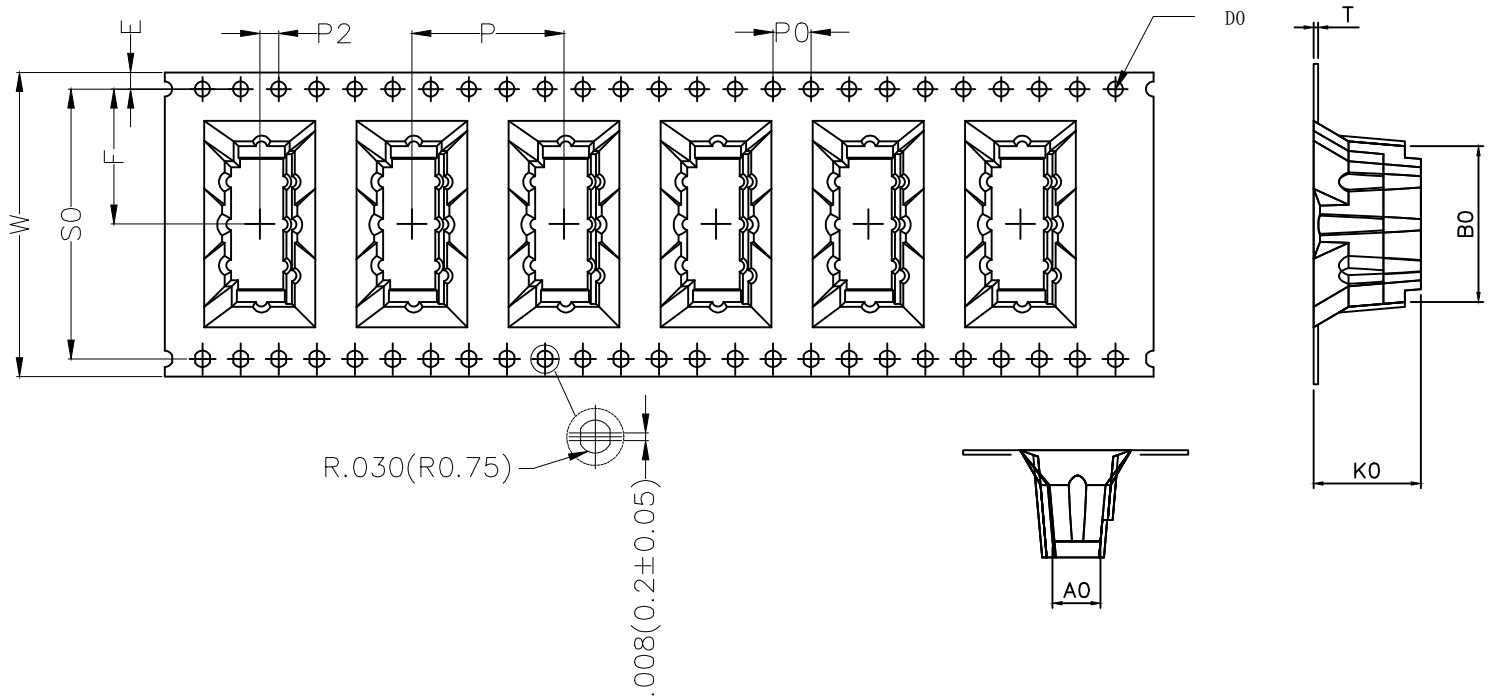
D

E

E

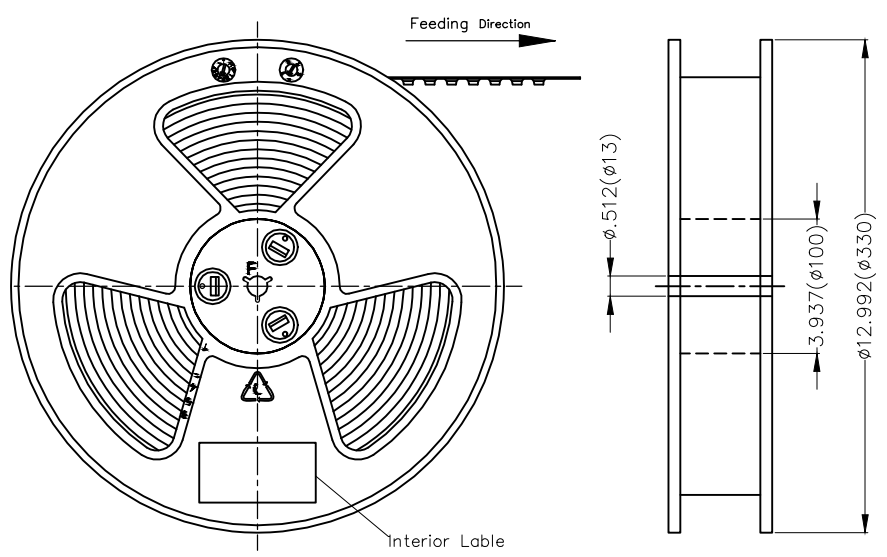
F

F

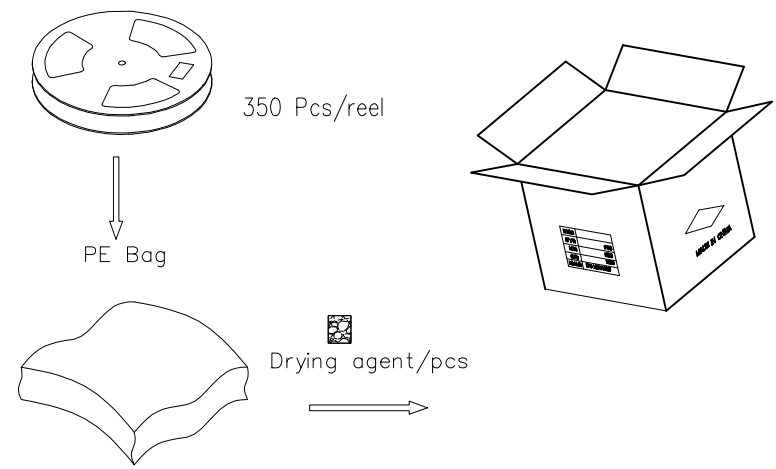
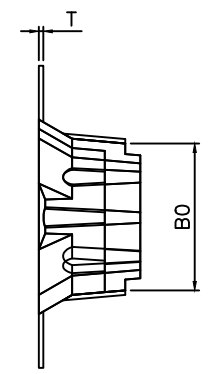
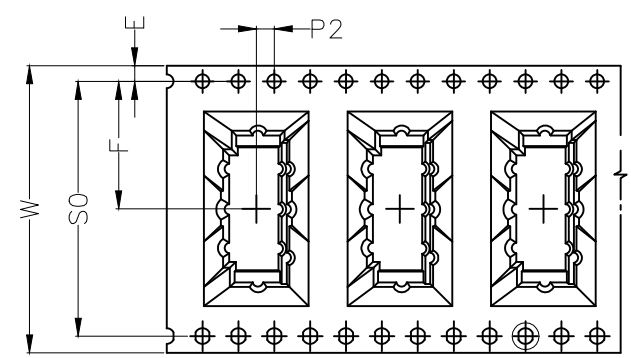
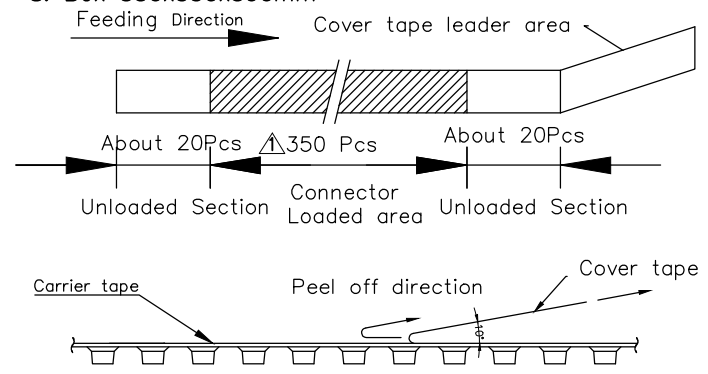


<p>THIRD ANGLE PROJECTION</p>	GENERAL TOLERANCES (UNLESS SPECIFIED)		APPROVE BY	DATE	PART NO.	ITEM NO.	
	X.X±.012(0.30)	X.'±5'	CHECKED BY	DATE	SATA MST301LBTR		
	X.X±.008(0.20)	.X'±2'	DRAWN BY	DATE	TITLE		REV 0
	X.XX±.006(0.15)	.XX'±1'		DATE	Packing: SATA 7P MALE SMT		SHEET NO. 3 / 4
SCALE	SIZE	X.XXX±.004(0.10)	.XXX'±0.5'				
5:1	A4						

1 2 3 4 5 6 7 8



- Note:
- 10 sprocket hole cumulative tolerance ± 0.2
 - Carrier camber is within 1.0mm in 250mm
 - Material: White Conductive polystyrene Alloy 100% recyclable
 - All dimensions meet EIA-481-3 requirements
 - Peel off force of cover tape & carrier tape: 20g ~ 130g (0.2N ~ 1.3N)
 - Component load per 13" reel: 350 pcs
 - Material PS, Black
 - Box 350x350x390mm



 THIRD ANGLE PROJECTION	GENERAL TOLERANCES (UNLESS SPECIFIED)		APPROVE BY	DATE	PART NO.	ITEM NO.		
	X.±.012(0.30)	X.'±5'	CHECKED BY	DATE	SATA MST301LBTR			
	DESIGN UNITS Inch (metric)	X.X±.008(0.20)	.X'±2'		28/JUN/20	TITLE		
	SCALE 5:1	SIZE A4	X.XX±.006(0.15)	.XX'±1'		Packing: SATA 7P MALE SMT		REV 1
		X.XXX±.004(0.10)	.XXX'±0.5'		28/JUN/20		SHEET NO. 4 / 4	